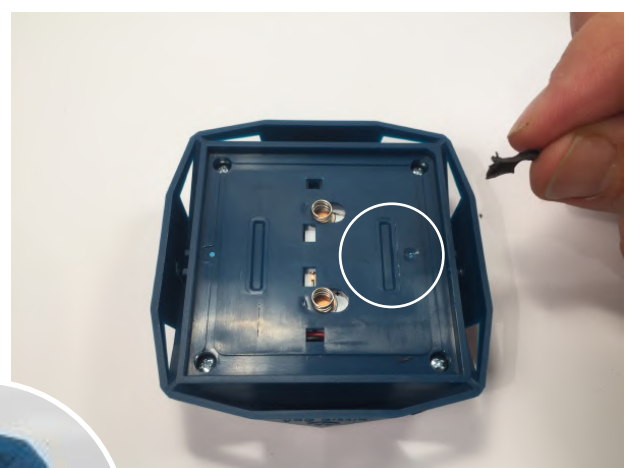
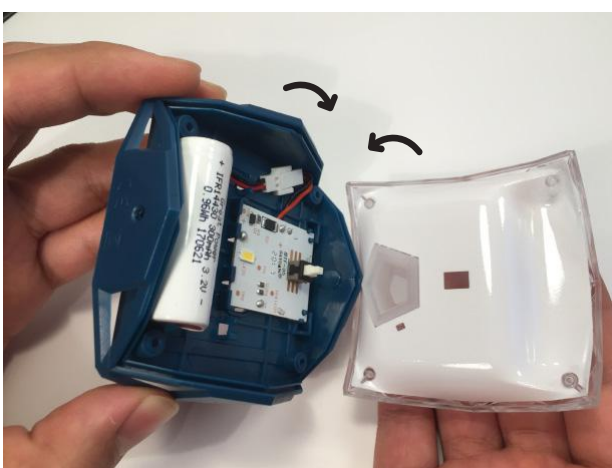
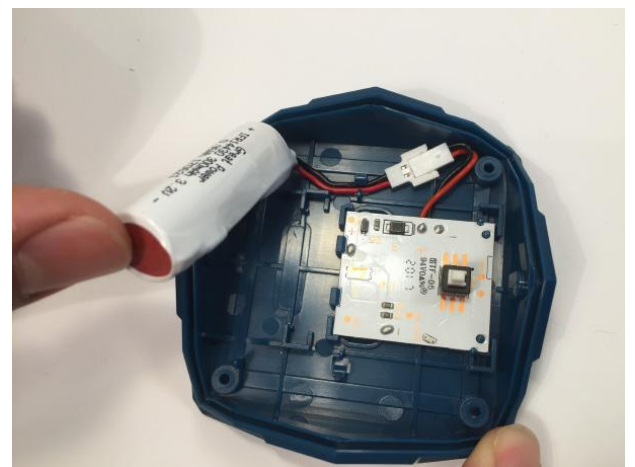
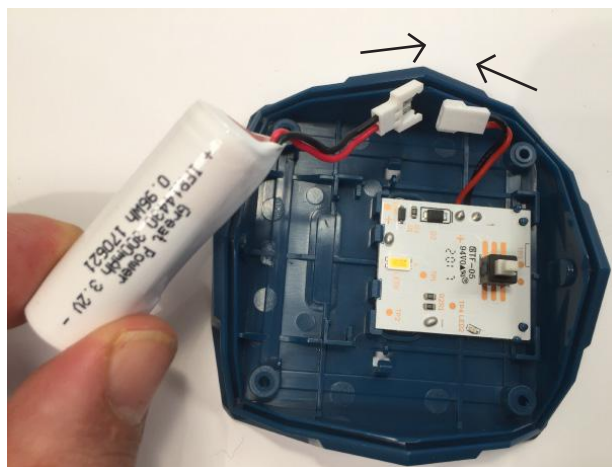
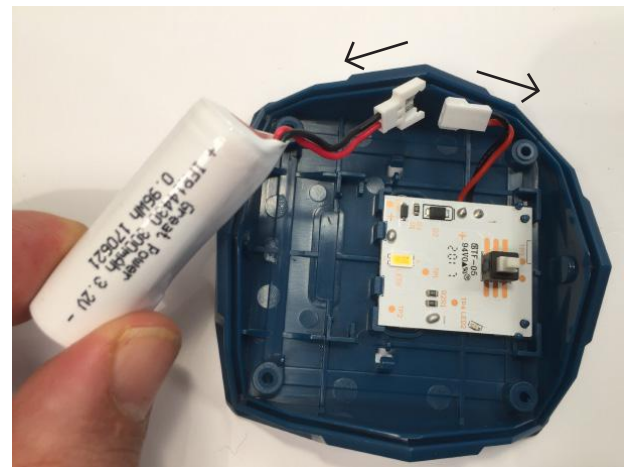
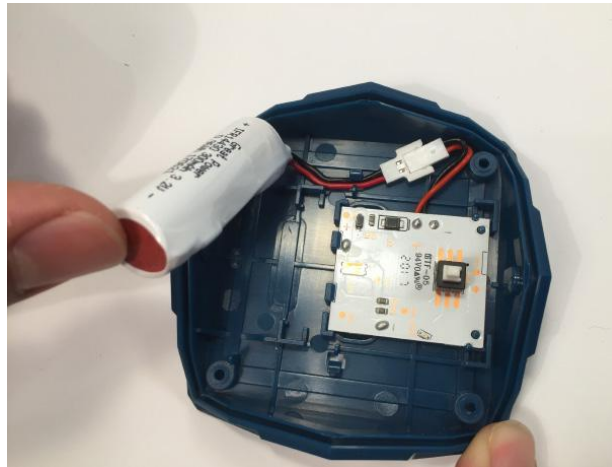
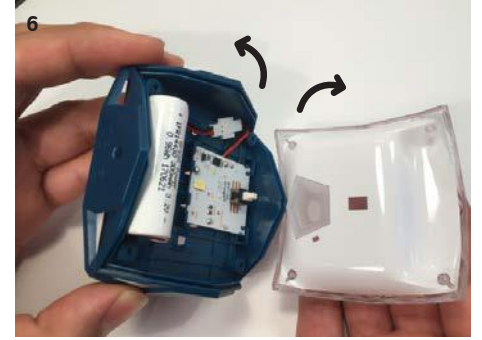
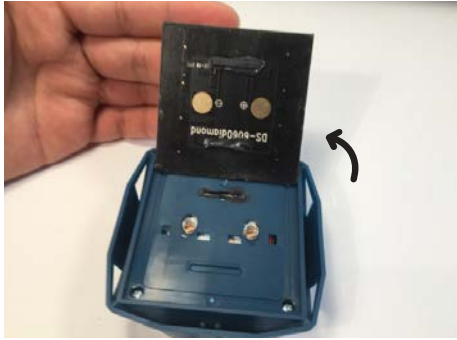
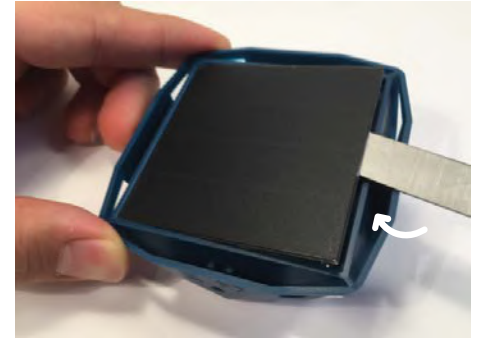


# Little Sun Diamond Battery Replacement Guide

## Tools needed:

- Lever (blade at least 7mm width and 0.5mm thick, round edges)
- Philips PH0 screwdriver
- Glue (Super X # 8008 from Cemedine or a comparable product)



**Batteries must be recycled or disposed properly – do not short circuit or dispose of in fire**



Little Sun